

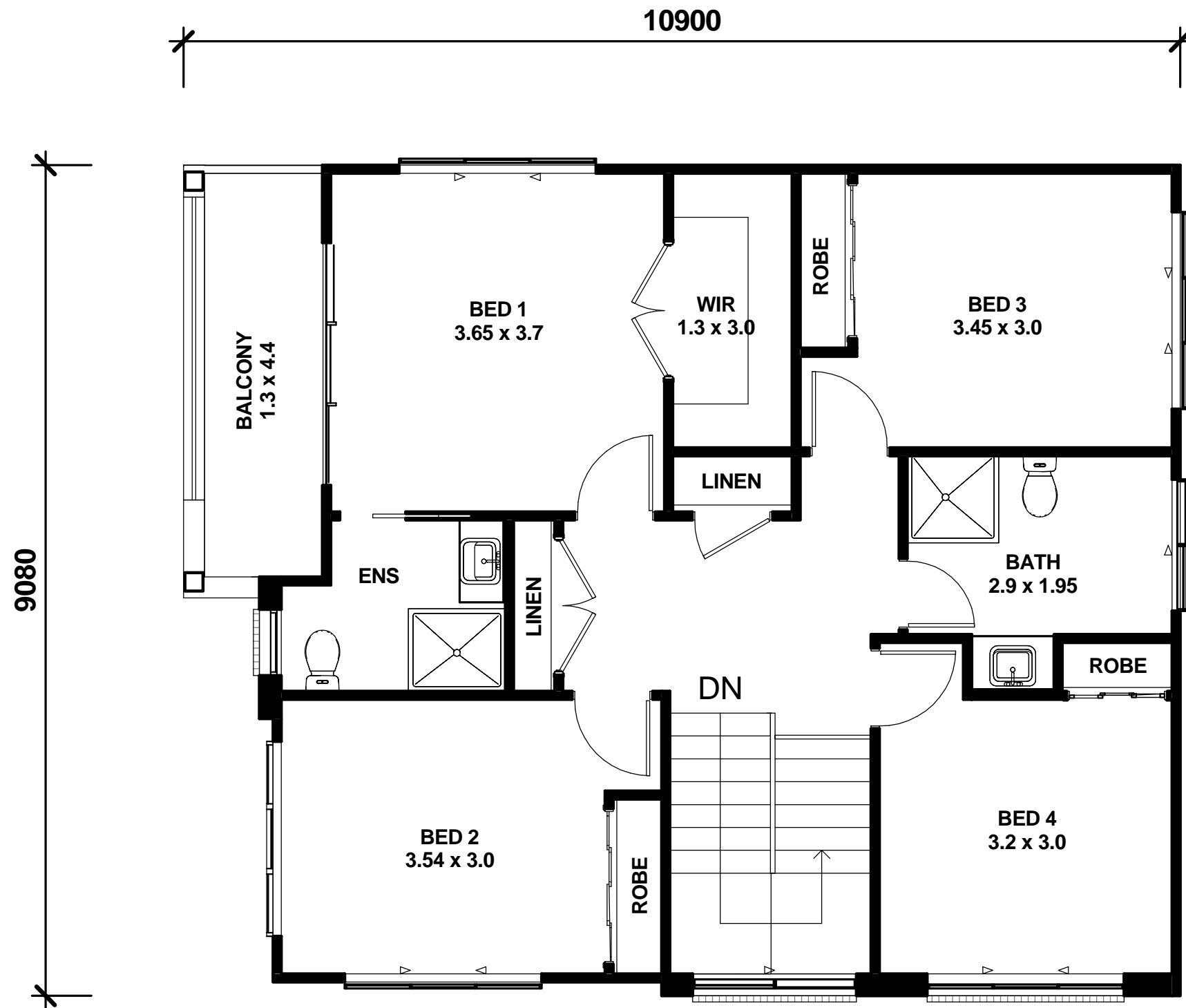
**VOGUE HOMES**  
 DESIGN - STYLE - ELEGANCE

© Copyright Vogue Homes all rights reserved.  
 Dimensions, photos and floor plans are for illustrative purpose only and may include optional features.  
 Vogue Homes reserves the right to change plans, specifications, materials, brands and prices without notice.  
 Capitol Constructions T/AS Vogue Homes.

**The Bryson 27**

**FLOOR AREA CALCULATION**

GARAGE	34.24 sqm
GROUND FLOOR	105.67 sqm
FIRST FLOOR	87.24 sqm
PORCH	5.77 sqm
BALCONY	6.84 sqm
ALFRESCO	10.50 sqm
<b>TOTAL FLOOR AREA</b>	<b>250.26 sqm</b>
<b>CDC FLOOR AREA</b>	<b>214.88 sqm</b>
<b>FLOOR SPACE RATIO</b>	<b>172.93 sqm</b>



  
**VOGUE HOMES**  
**DESIGN - STYLE - ELEGANCE**

© Copyright Vogue Homes all rights reserved.  
 Dimensions, photos and floor plans are for illustrative purpose only and may include optional features.  
 Vogue Homes reserves the right to change plans, specifications, materials, brands and prices without notice.  
 Capitol Constructions T/AS Vogue Homes.

## The Bryson 27

### FLOOR AREA CALCULATION

GARAGE	34.24 sqm
GROUND FLOOR	105.67 sqm
FIRST FLOOR	87.24 sqm
PORCH	5.77 sqm
BALCONY	6.84 sqm
ALFRESCO	10.50 sqm
<hr/>	
<b>TOTAL FLOOR AREA</b>	<b>250.26 sqm</b>
<b>CDC FLOOR AREA</b>	<b>214.88 sqm</b>
<b>FLOOR SPACE RATIO</b>	<b>172.93 sqm</b>