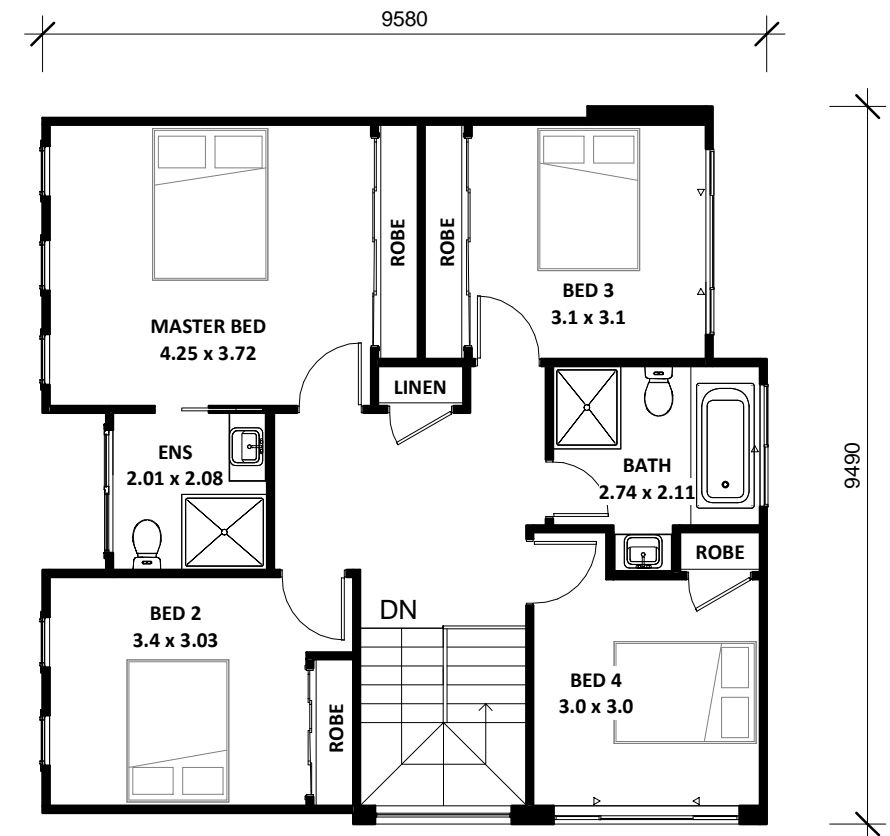


1 Ground Floor
1 : 100



2 First Floor
1 : 100

Area Schedule		
Number	Name	Area
1	Garage	33.08 m ²
2	Ground Floor	83.45 m ²
3	First Floor	85.09 m ²
4	Porch	5.83 m ²
5	Alfresco	10.50 m ²
Total Floor Area		217.95 m ²

CDC Floor Area		
Number	Name	Area
1	Ground Floor	83.57 m ²
2	First Floor	75.35 m ²
Total CDC Floor Area		158.92 m ²

Stirling 23 (II)

13m Wide Frontage

Ground & First Floor



Vogue Homes NSW
 ABN: 84 064 786 885
 P: (02) 9607 9554
 F: (02) 9607 0554
 E: sales@vogue-homes.com.au
 W: www.vogue-homes.com.au



© Copyright Vogue Homes NSW all rights reserved.
 Dimensions, photos and floor plans are for illustrative purpose only and may include optional features.
 Vogue Homes reserves the right to change plans, specifications, materials, brands and prices without notice.
 Capitol Constructions T/AS Vogue Homes NSW.