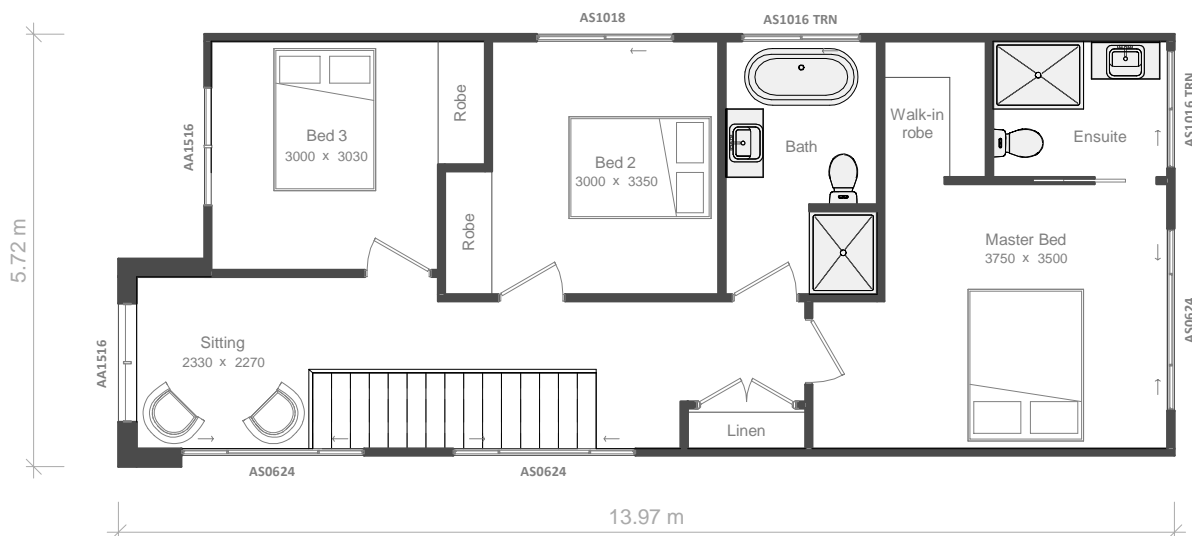
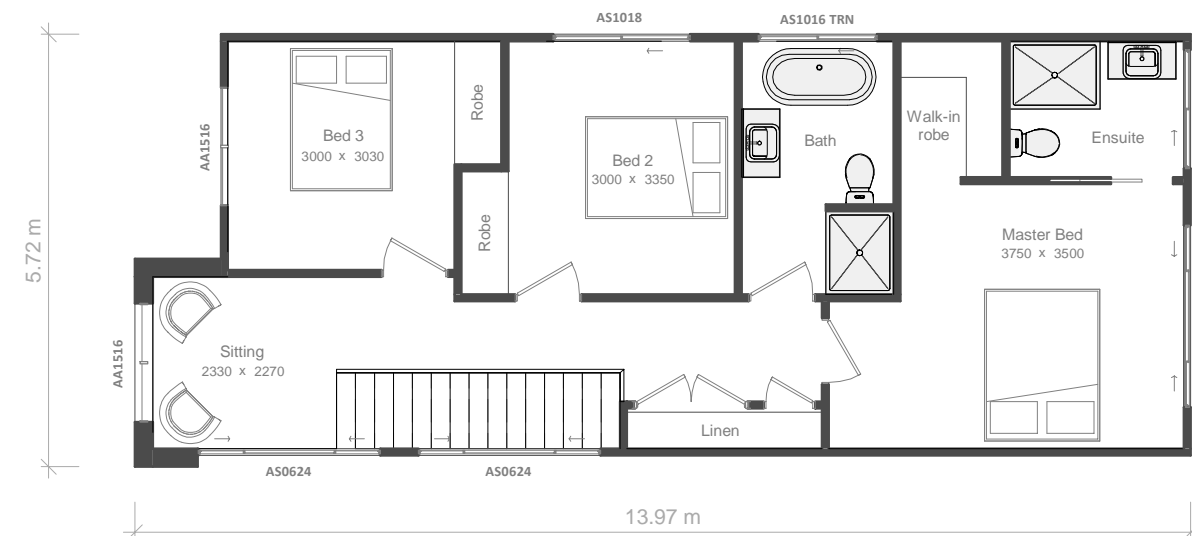


Front Access Stairs

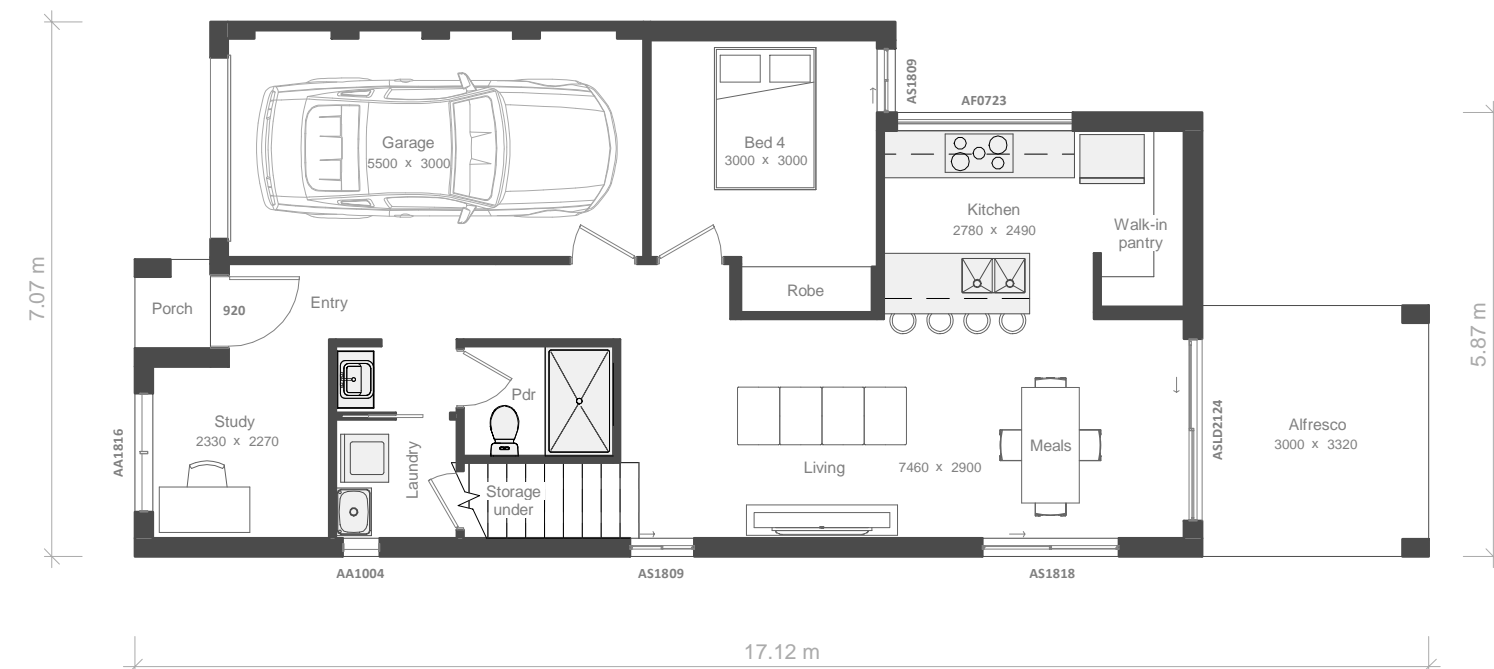
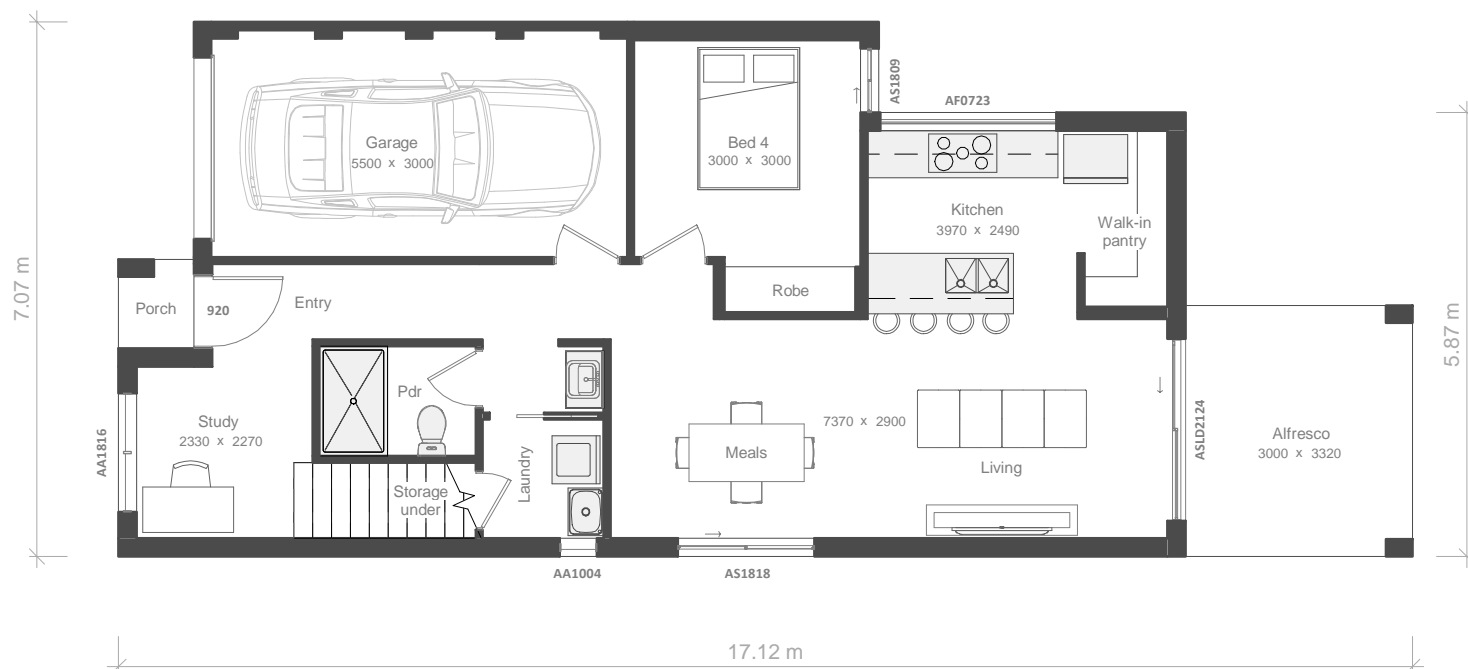


Rear Access Stairs



9.06 m
boundary wall option

9.06 m
boundary wall option



Area Schedule

Number	Name	Area
1	Garage	17.82 m ²
2	Ground Floor	72.82 m ²
3	First Floor	74.55 m ²
4	Porch	1.18 m ²
5	Alfresco	9.96 m ²
Total Floor Area		176.33 m²

CDC Floor Area

Number	Name	Area
1	Ground Floor	62.53 m ²
2	First Floor	66.68 m ²
Total CDC Floor Area		129.21 m²

CDC Floor Area is the gross floor area of the dwelling as defined in the relevant legislation and does not represent the overall size of the dwelling. The Total Floor Area table is to be referred to for the overall dwelling size.

Design completed in accordance with CDC Greenfield Housing Code.

Avilla 19

Minimum Site Dimensions 8m x 25m

Ground Floor & First Floor



definitivedrafting

Vogue Homes NSW
 ABN: 84 064 786 885
 P: (02) 9607 9554
 F: (02) 9607 0554
 E: sales@vogue-homes.com.au
 W: www.vogue-homes.com.au



VOGUE HOMES

DESIGN - STYLE - ELEGANCE

© Copyright Vogue Homes NSW all rights reserved.
 Dimensions, photos and floor plans are for illustrative purpose only and may include optional features.
 Vogue Homes reserves the right to change plans, specifications, materials, brands and prices without notice.
 Capitol Constructions T/AS Vogue Homes NSW.