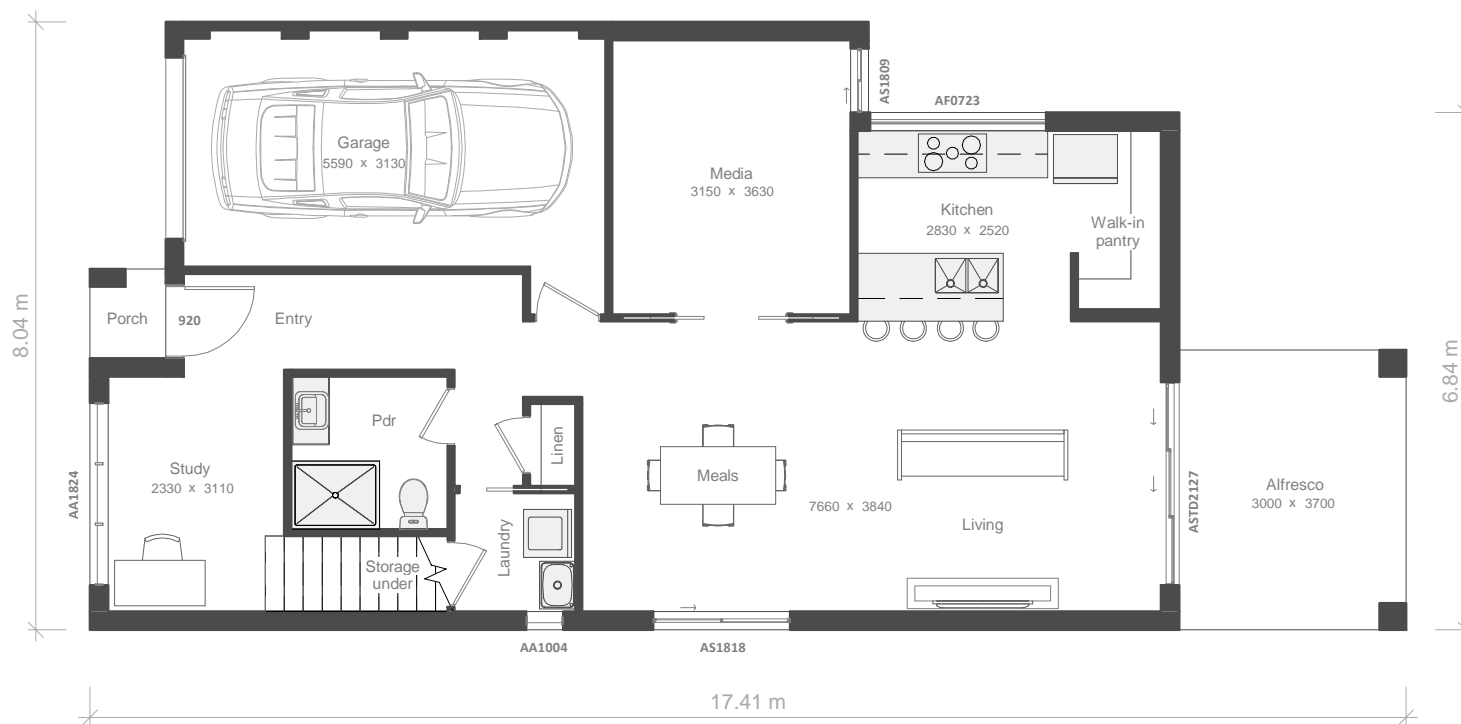
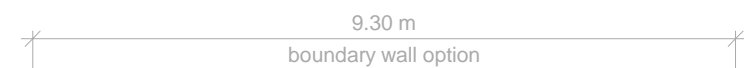
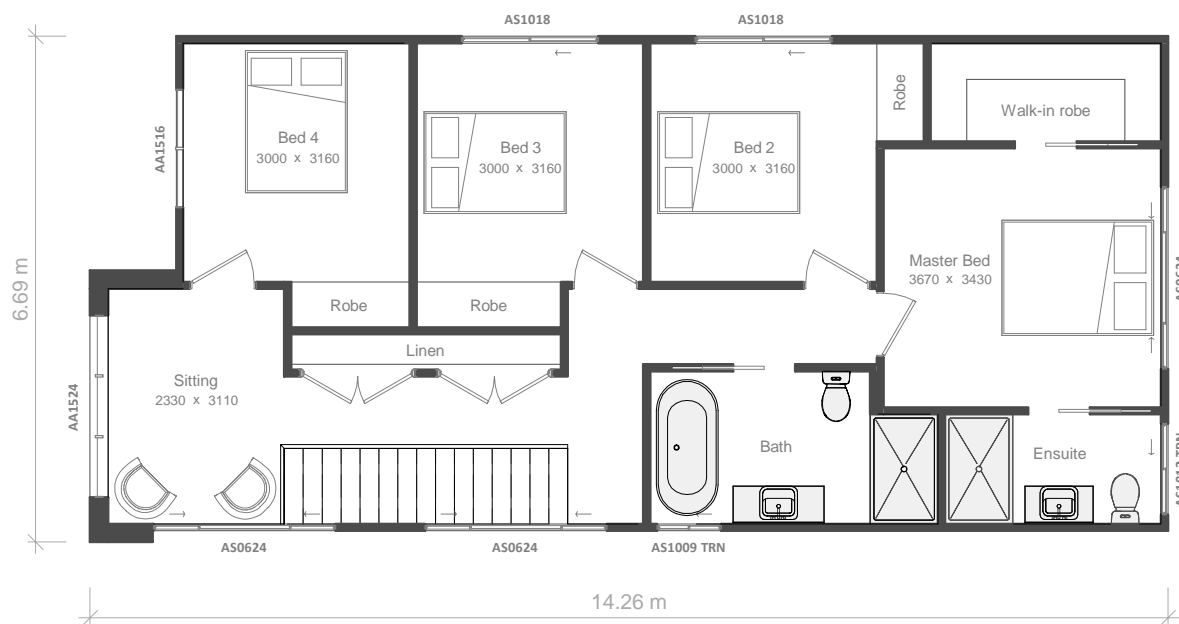
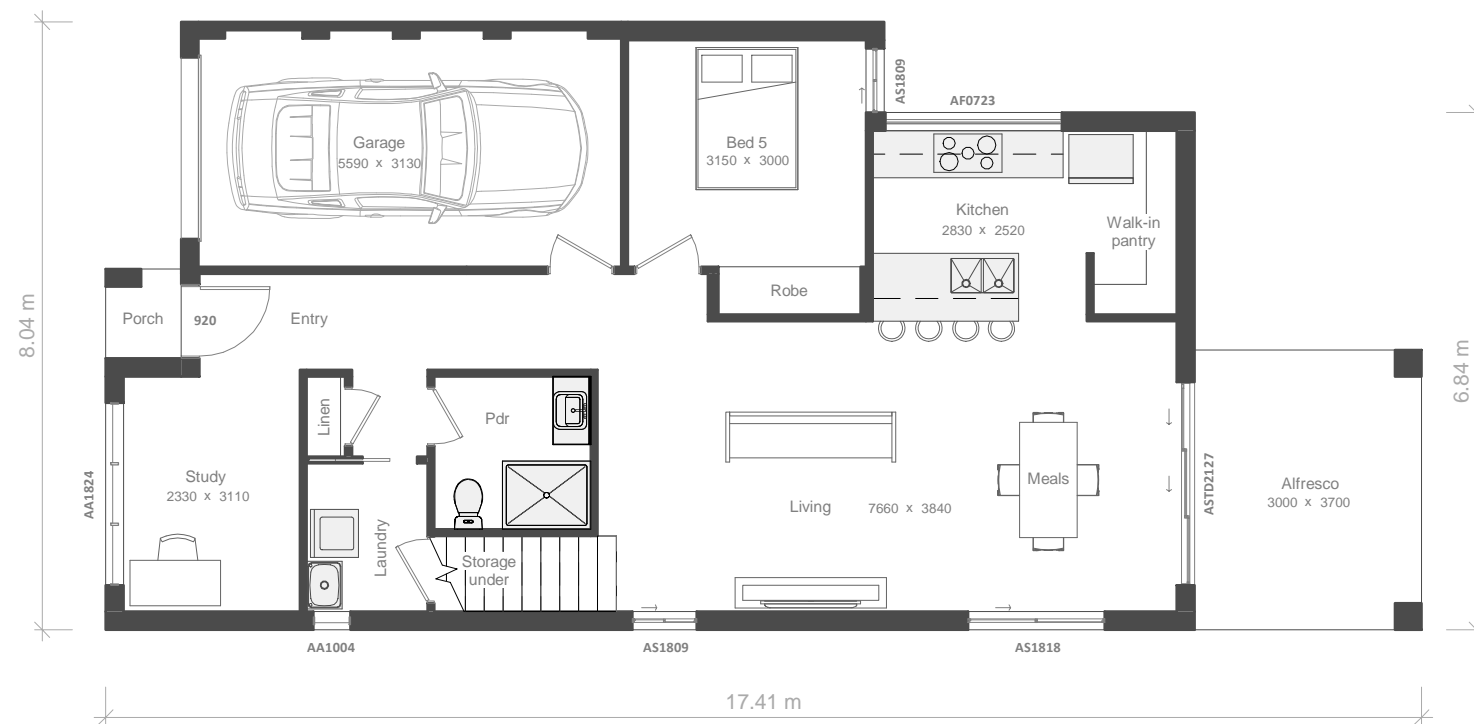
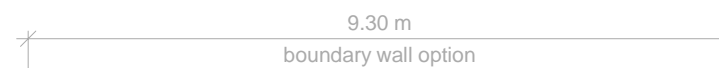
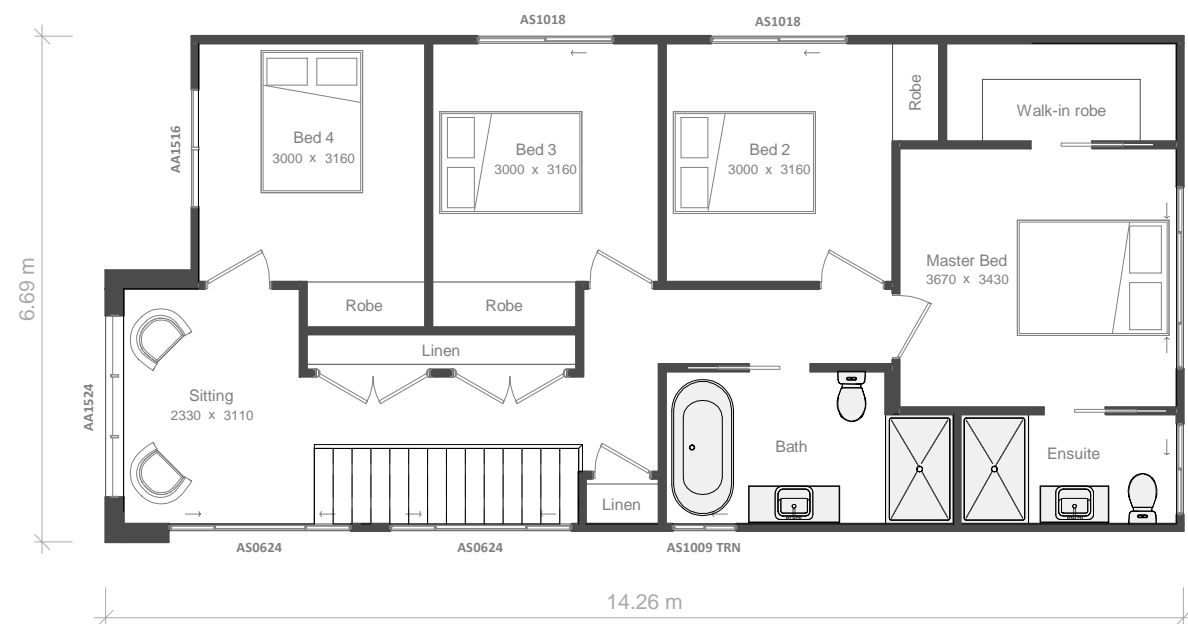


Front Access Stairs (Media Room Option)



Rear Access Stairs (5 Bedroom Option)



Area Schedule		
Number	Name	Area
1	Garage	19.49 m ²
2	Ground Floor	86.99 m ²
3	First Floor	89.85 m ²
4	Porch	1.18 m ²
5	Alfresco	11.10 m ²
Total Floor Area		208.61 m ²

CDC Floor Area		
Number	Name	Area
1	Ground Floor	77.78 m ²
2	First Floor	81.63 m ²
Total CDC Floor Area		159.40 m ²

CDC Floor Area is the gross floor area of the dwelling as defined in the relevant legislation and does not represent the overall size of the dwelling. The Total Floor Area table is to be referred to for the overall dwelling size.
Design completed in accordance with CDC Greenfield Housing Code.

Avilla 22

Minimum Site Dimensions 9m x 25m

Ground Floor & First Floor



Vogue Homes NSW
 ABN: 84 064 786 885
 P: (02) 9607 9554
 F: (02) 9607 0554
 E: sales@vogue-homes.com.au
 W: www.vogue-homes.com.au



© Copyright Vogue Homes NSW all rights reserved.
 Dimensions, photos and floor plans are for illustrative purpose only and may include optional features.
 Vogue Homes reserves the right to change plans, specifications, materials, brands and prices without notice.
 Capitol Constructions T/AS Vogue Homes NSW.