

Area Schedule		
Number	Name	Area
1	Garage	33.20 m <sup>2</sup>
2	Ground Floor	238.04 m <sup>2</sup>
3	Porch	2.52 m <sup>2</sup>
4	Alfresco	24.42 m <sup>2</sup>
Total Floor Area		298.18 m <sup>2</sup>

Gross Floor Area		
Number	Name	Area
1	Ground Floor	237.26 m <sup>2</sup>
Total Gross Floor Area		237.26 m <sup>2</sup>

Gross floor area of the dwelling is as defined in the relevant legislation and does not represent the overall size of the dwelling. The Total Floor Area table is to be referred to for the overall dwelling size.

## Alyssa 32

## Ground Floor



definitivedrafting

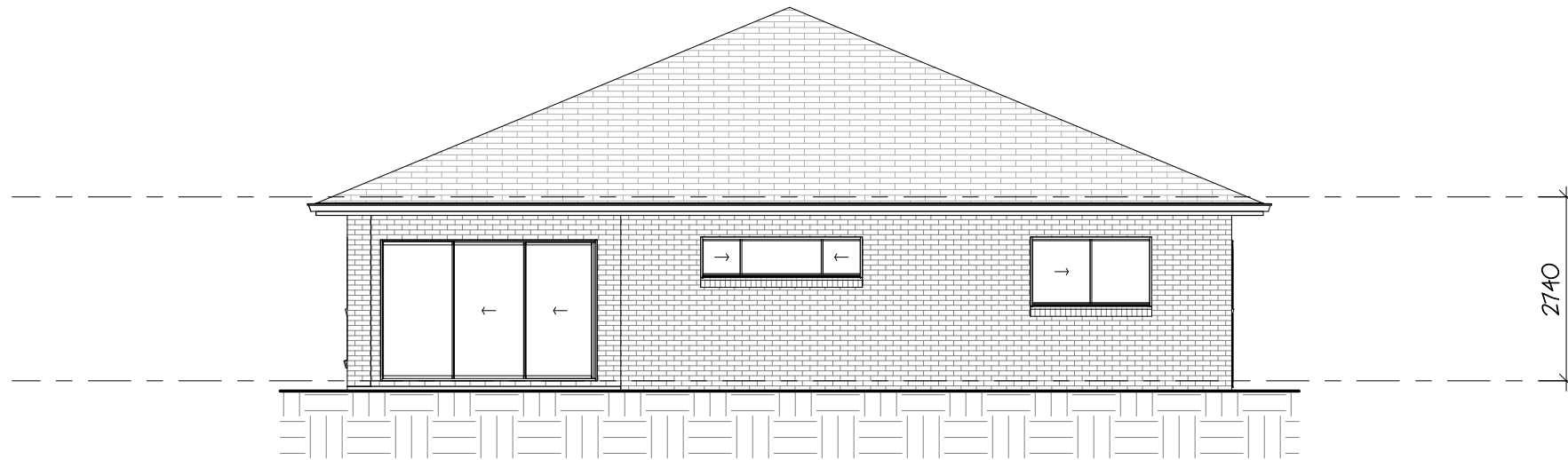
Vogue Homes NSW  
 ABN: 84 064 786 885  
 P: (02) 9607 9554  
 F: (02) 9607 0554  
 E: sales@vogue-homes.com.au  
 W: www.vogue-homes.com.au



© Copyright Vogue Homes NSW all rights reserved.  
 Dimensions, photos and floor plans are for illustrative purpose only and may include optional features.  
 Vogue Homes reserves the right to change plans, specifications, materials, brands and prices without notice.  
 Capitol Constructions T/AS Vogue Homes NSW.



**1** Front Elevation  
1 : 100



**2** Rear Elevation  
1 : 100

Area Schedule		
Number	Name	Area
1	Garage	33.20 m <sup>2</sup>
2	Ground Floor	238.04 m <sup>2</sup>
3	Porch	2.52 m <sup>2</sup>
4	Alfresco	24.42 m <sup>2</sup>
Total Floor Area		298.18 m <sup>2</sup>

Gross Floor Area		
Number	Name	Area
1	Ground Floor	237.26 m <sup>2</sup>
Total Gross Floor Area		237.26 m <sup>2</sup>

Gross floor area of the dwelling is as defined in the relevant legislation and does not represent the overall size of the dwelling. The Total Floor Area table is to be referred to for the overall dwelling size.

## Alyssa 32

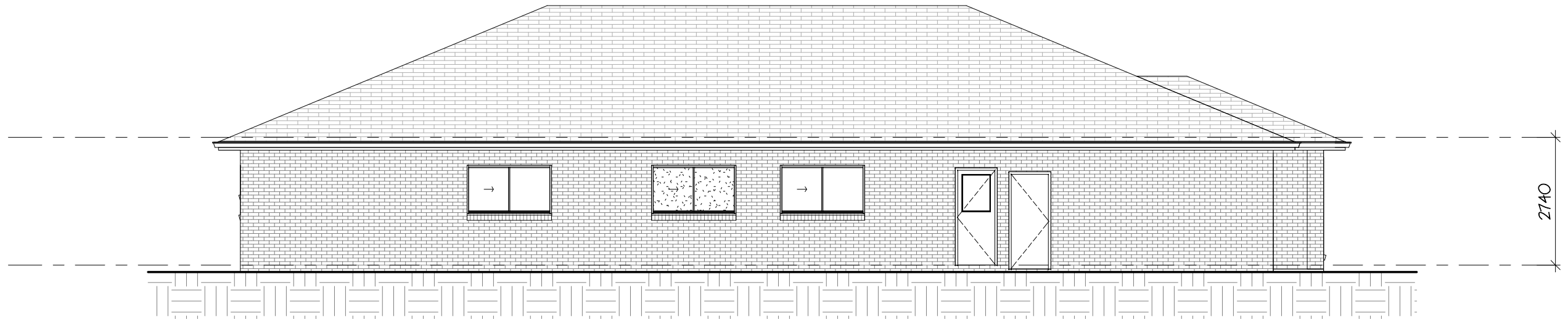
### Front & Rear



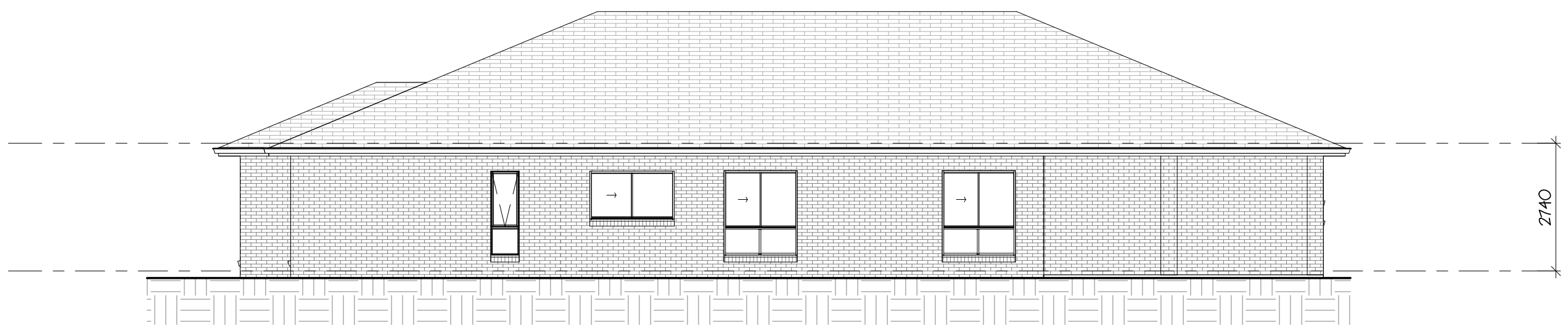
Vogue Homes NSW  
 ABN: 84 064 786 885  
 P: (02) 9607 9554  
 F: (02) 9607 0554  
 E: sales@vogue-homes.com.au  
 W: www.vogue-homes.com.au



© Copyright Vogue Homes NSW all rights reserved.  
 Dimensions, photos and floor plans are for illustrative purpose only and may include optional features.  
 Vogue Homes reserves the right to change plans, specifications, materials, brands and prices without notice.  
 Capitol Constructions T/AS Vogue Homes NSW.



**3** Left Side Elevation  
1 : 100



**4** Right Side Elevation  
1 : 100

Area Schedule		
Number	Name	Area
1	Garage	33.20 m <sup>2</sup>
2	Ground Floor	238.04 m <sup>2</sup>
3	Porch	2.52 m <sup>2</sup>
4	Alfresco	24.42 m <sup>2</sup>
Total Floor Area		298.18 m <sup>2</sup>

Gross Floor Area		
Number	Name	Area
1	Ground Floor	237.26 m <sup>2</sup>
Total Gross Floor Area		237.26 m <sup>2</sup>

Gross floor area of the dwelling is as defined in the relevant legislation and does not represent the overall size of the dwelling. The Total Floor Area table is to be referred to for the overall dwelling size.

## Alyssa 32

### Sides



Vogue Homes NSW  
 ABN: 84 064 786 885  
 P: (02) 9607 9554  
 F: (02) 9607 0554  
 E: sales@vogue-homes.com.au  
 W: www.vogue-homes.com.au



© Copyright Vogue Homes NSW all rights reserved.  
 Dimensions, photos and floor plans are for illustrative purpose only and may include optional features.  
 Vogue Homes reserves the right to change plans, specifications, materials, brands and prices without notice.  
 Capitol Constructions T/AS Vogue Homes NSW.