

Area Schedule		
Number	Name	Area
1	Garage	35.96 m ²
2	Ground Floor	253.06 m ²
3	Porch	2.52 m ²
4	Alfresco	26.13 m ²
Total Floor Area		317.67 m ²

Gross Floor Area		
Number	Name	Area
1	Ground Floor	254.33 m ²
Total Gross Floor Area		254.33 m ²

Gross floor area of the dwelling is as defined in the relevant legislation and does not represent the overall size of the dwelling. The Total Floor Area table is to be referred to for the overall dwelling size.

Alyssa 34

Ground Floor



definitivedrafting

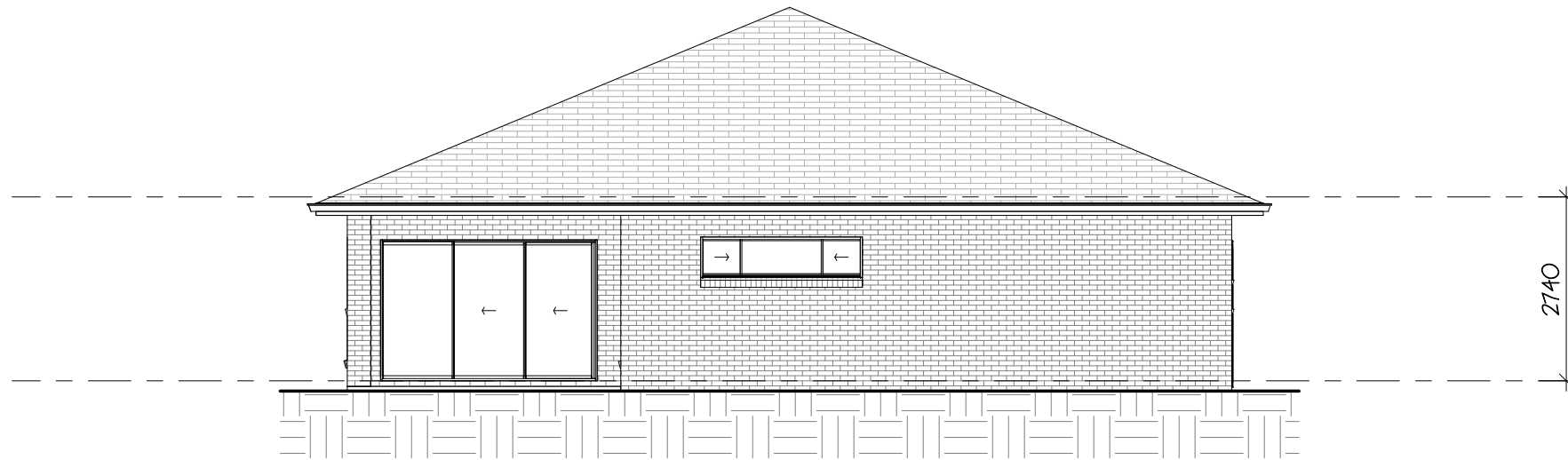
Vogue Homes NSW
 ABN: 84 064 786 885
 P: (02) 9607 9554
 F: (02) 9607 0554
 E: sales@vogue-homes.com.au
 W: www.vogue-homes.com.au



© Copyright Vogue Homes NSW all rights reserved.
 Dimensions, photos and floor plans are for illustrative purpose only and may include optional features.
 Vogue Homes reserves the right to change plans, specifications, materials, brands and prices without notice.
 Capitol Constructions T/AS Vogue Homes NSW.



1 Front Elevation
1 : 100



2 Rear Elevation
1 : 100

Area Schedule		
Number	Name	Area
1	Garage	35.96 m ²
2	Ground Floor	253.06 m ²
3	Porch	2.52 m ²
4	Alfresco	26.13 m ²
Total Floor Area		317.67 m ²

Gross Floor Area		
Number	Name	Area
1	Ground Floor	254.33 m ²
Total Gross Floor Area		254.33 m ²

CDC Floor Area is the gross floor area of the dwelling as defined in the relevant legislation and does not represent the overall size of the dwelling. The Total Floor Area table is to be referred to for the overall dwelling size.
Design completed in accordance with CDC Greenfield Housing Code.

Alyssa 34

Minimum Site Dimensions 15m x 32.22m

Front & Rear

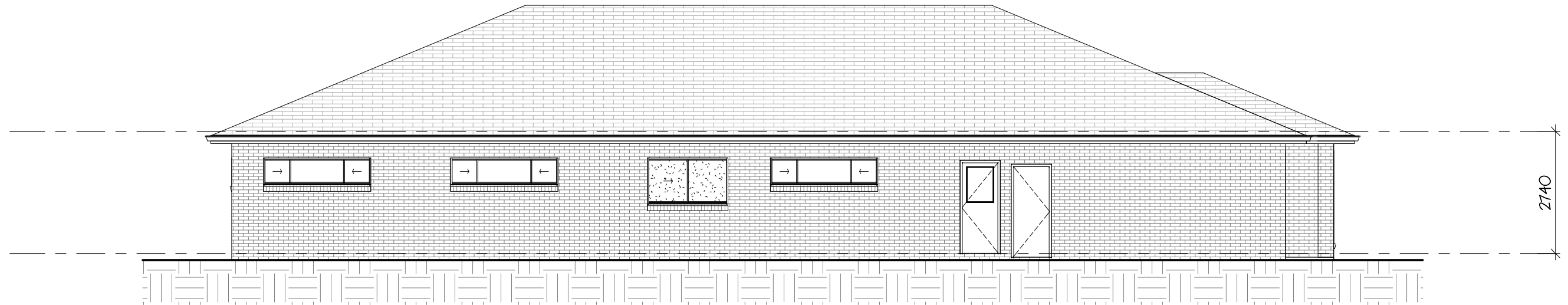


definitivedrafting

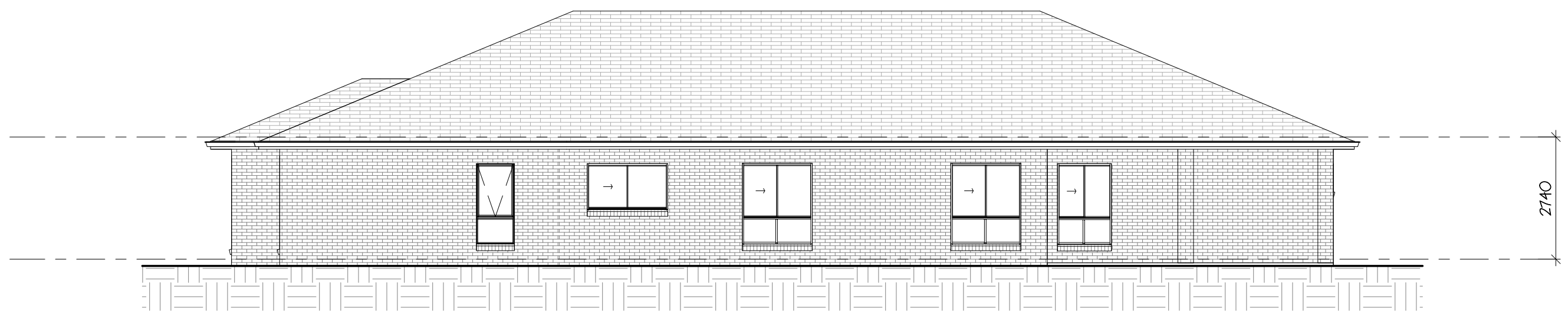
Vogue Homes NSW
 ABN: 84 064 786 885
 P: (02) 9607 9554
 F: (02) 9607 0554
 E: sales@vogue-homes.com.au
 W: www.vogue-homes.com.au



© Copyright Vogue Homes NSW all rights reserved.
 Dimensions, photos and floor plans are for illustrative purpose only and may include optional features.
 Vogue Homes reserves the right to change plans, specifications, materials, brands and prices without notice.
 Capitol Constructions T/AS Vogue Homes NSW.



3 Left Side Elevation
1 : 100



4 Right Side Elevation
1 : 100

Area Schedule		
Number	Name	Area
1	Garage	35.96 m ²
2	Ground Floor	253.06 m ²
3	Porch	2.52 m ²
4	Alfresco	26.13 m ²
Total Floor Area		317.67 m ²

Gross Floor Area		
Number	Name	Area
1	Ground Floor	254.33 m ²
Total Gross Floor Area		254.33 m ²

CDC Floor Area is the gross floor area of the dwelling as defined in the relevant legislation and does not represent the overall size of the dwelling. The Total Floor Area table is to be referred to for the overall dwelling size.
Design completed in accordance with CDC Greenfield Housing Code.

Alyssa 34

Minimum Site Dimensions 15m x 32.22m

Sides



definitivedrafting

Vogue Homes NSW
 ABN: 84 064 786 885
 P: (02) 9607 9554
 F: (02) 9607 0554
 E: sales@vogue-homes.com.au
 W: www.vogue-homes.com.au



VOGUE HOMES

DESIGN - STYLE - ELEGANCE

© Copyright Vogue Homes NSW all rights reserved.
 Dimensions, photos and floor plans are for illustrative purpose only and may include optional features.
 Vogue Homes reserves the right to change plans, specifications, materials, brands and prices without notice.
 Capitol Constructions T/AS Vogue Homes NSW.