

Area Schedule		
Number	Name	Area
1	Garage	18.32 m ²
2	Ground Floor	69.30 m ²
3	First Floor	76.03 m ²
4	Porch	3.25 m ²
5	Alfresco	10.55 m ²
6	Granny Flat	47.34 m ²
Total Floor Area		224.78 m ²

CDC Floor Area		
Number	Name	Area
1	GF Gross Floor Area	104.86 m ²
2	Garage Exclusion	16.50 m ²
3	FF Gross Floor Area	70.00 m ²
Total CDC Floor Area		191.36 m ²

CDC Floor Area is the gross floor area of the dwelling as defined in the relevant legislation and does not represent the overall size of the dwelling. The Total Floor Area table is to be referred to for the overall dwelling size.

Design completed in accordance with CDC Greenfield Housing Code.

Bryson 24

Minimum Site Dimensions 10m x 28m

Ground Floor & First Floor



Vogue Homes NSW
 ABN: 84 064 786 885
 P: (02) 9607 9554
 F: (02) 9607 0554
 E: sales@vogue-homes.com.au
 W: www.vogue-homes.com.au



© Copyright Vogue Homes NSW all rights reserved.
 Dimensions, photos and floor plans are for illustrative purpose only and may include optional features.
 Vogue Homes reserves the right to change plans, specifications, materials, brands and prices without notice.
 Capitol Constructions T/AS Vogue Homes NSW.



1 Front Elevation
1 : 100



2 Rear Elevation
1 : 100

Area Schedule		
Number	Name	Area
1	Garage	18.32 m ²
2	Ground Floor	69.30 m ²
3	First Floor	76.03 m ²
4	Porch	3.25 m ²
5	Alfresco	10.55 m ²
6	Granny Flat	47.34 m ²
Total Floor Area		224.78 m ²

CDC Floor Area		
Number	Name	Area
1	GF Gross Floor Area	104.86 m ²
2	Garage Exclusion	16.50 m ²
3	FF Gross Floor Area	70.00 m ²
Total CDC Floor Area		191.36 m ²

CDC Floor Area is the gross floor area of the dwelling as defined in the relevant legislation and does not represent the overall size of the dwelling. The Total Floor Area table is to be referred to for the overall dwelling size.

Design completed in accordance with CDC Greenfield Housing Code.

Bryson 24

Minimum Site Dimensions 10m x 28m

Elevations - Front & Rear


definitivedrafting

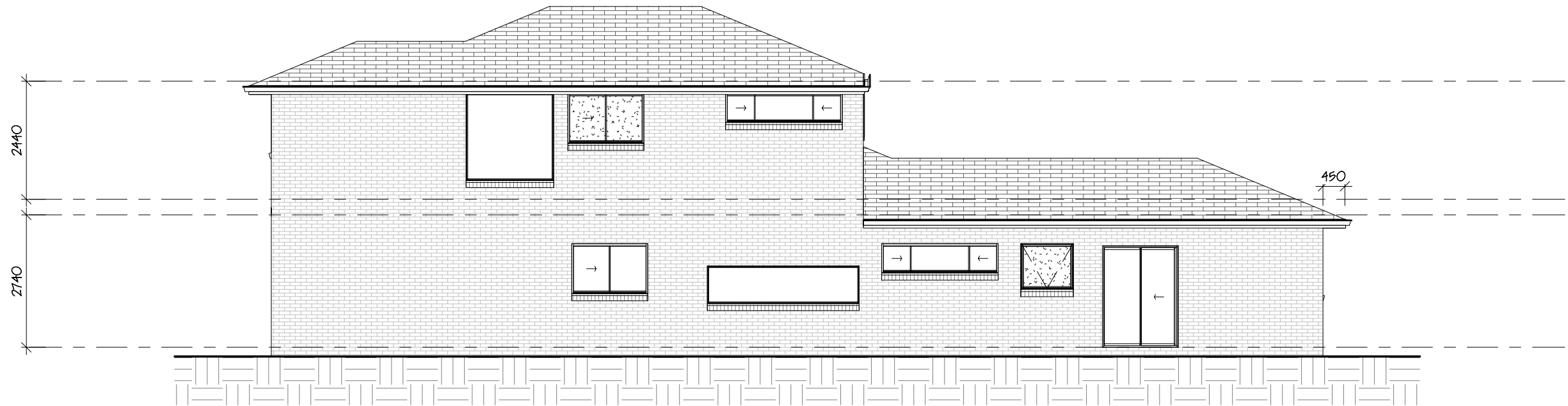
Vogue Homes NSW
ABN: 84 064 786 885
P: (02) 9607 9554
F: (02) 9607 0554
E: sales@vogue-homes.com.au
W: www.vogue-homes.com.au


VOGUE HOMES
DESIGN - STYLE - ELEGANCE

© Copyright Vogue Homes NSW all rights reserved.

Dimensions, photos and floor plans are for illustrative purpose only and may include optional features. Vogue Homes reserves the right to change plans, specifications, materials, brands and prices without notice.

Capitol Constructions T/AS Vogue Homes NSW.



3 Right Side Elevation
1 : 100



4 Left Side Elevation
1 : 100

Area Schedule		
Number	Name	Area
1	Garage	18.32 m ²
2	Ground Floor	69.30 m ²
3	First Floor	76.03 m ²
4	Porch	3.25 m ²
5	Alfresco	10.55 m ²
6	Granny Flat	47.34 m ²
Total Floor Area		224.78 m ²

CDC Floor Area		
Number	Name	Area
1	GF Gross Floor Area	104.86 m ²
2	Garage Exclusion	16.50 m ²
3	FF Gross Floor Area	70.00 m ²
Total CDC Floor Area		191.36 m ²

CDC Floor Area is the gross floor area of the dwelling as defined in the relevant legislation and does not represent the overall size of the dwelling. The Total Floor Area table is to be referred to for the overall dwelling size.

Design completed in accordance with CDC Greenfield Housing Code.

Bryson 24

Minimum Site Dimensions 10m x 28m

Elevations - Side



Vogue Homes NSW
ABN: 84 064 786 885
P: (02) 9607 9554
F: (02) 9607 0554
E: sales@vogue-homes.com.au
W: www.vogue-homes.com.au



© Copyright Vogue Homes NSW all rights reserved.
Dimensions, photos and floor plans are for illustrative purpose only and may include optional features. Vogue Homes reserves the right to change plans, specifications, materials, brands and prices without notice. Capitol Constructions T/AS Vogue Homes NSW.