

Area Schedule		
Number	Name	Area
1	Garage	23.50 m ²
2	Ground Floor	119.83 m ²
3	First Floor	117.06 m ²
4	Porch	1.34 m ²
5	Alfresco	9.50 m ²

Unit Floor Area 271.22 m²
 Total Floor Area 542.43 m²

Gross Floor Area		
Number	Name	Area
1	Ground Floor	117.75 m ²
2	First Floor	113.53 m ²
Total Gross Floor Area (Per Unit)		231.28 m ²

Gross floor area of the dwelling is as defined in the relevant legislation and does not represent the overall size of the dwelling. The Total Floor Area table is to be referred to for the overall dwelling size.

Sierra 58

Ground Floor



Vogue Homes NSW
 ABN: 84 064 786 885
 P: (02) 9607 9554
 F: (02) 9607 0554
 E: sales@vogue-homes.com.au
 W: www.vogue-homes.com.au



© Copyright Vogue Homes NSW all rights reserved.
 Dimensions, photos and floor plans are for illustrative purpose only and may include optional features.
 Vogue Homes reserves the right to change plans, specifications, materials, brands and prices without notice.
 Capitol Constructions T/AS Vogue Homes NSW.



Area Schedule		
Number	Name	Area
1	Garage	23.50 m ²
2	Ground Floor	119.83 m ²
3	First Floor	117.06 m ²
4	Porch	1.34 m ²
5	Alfresco	9.50 m ²

Unit Floor Area 271.22 m²
 Total Floor Area 542.43 m²

Gross Floor Area		
Number	Name	Area
1	Ground Floor	117.75 m ²
2	First Floor	113.53 m ²
Total Gross Floor Area (Per Unit)		231.28 m ²

Gross floor area of the dwelling is as defined in the relevant legislation and does not represent the overall size of the dwelling. The Total Floor Area table is to be referred to for the overall dwelling size.

Sierra 58

First Floor



Vogue Homes NSW
 ABN: 84 064 786 885
 P: (02) 9607 9554
 F: (02) 9607 0554
 E: sales@vogue-homes.com.au
 W: www.vogue-homes.com.au



© Copyright Vogue Homes NSW all rights reserved.
 Dimensions, photos and floor plans are for illustrative purpose only and may include optional features.
 Vogue Homes reserves the right to change plans, specifications, materials, brands and prices without notice.
 Capitol Constructions T/AS Vogue Homes NSW.



1 Front Elevation
1 : 100



2 Rear Elevation
1 : 100

Area Schedule		
Number	Name	Area
1	Garage	23.50 m ²
2	Ground Floor	119.83 m ²
3	First Floor	117.06 m ²
4	Porch	1.34 m ²
5	Alfresco	9.50 m ²

Unit Floor Area 271.22 m²
Total Floor Area 542.43 m²

Gross Floor Area		
Number	Name	Area
1	Ground Floor	117.75 m ²
2	First Floor	113.53 m ²
Total Gross Floor Area (Per Unit)		231.28 m ²

Gross floor area of the dwelling is as defined in the relevant legislation and does not represent the overall size of the dwelling. The Total Floor Area table is to be referred to for the overall dwelling size.

Sierra 58

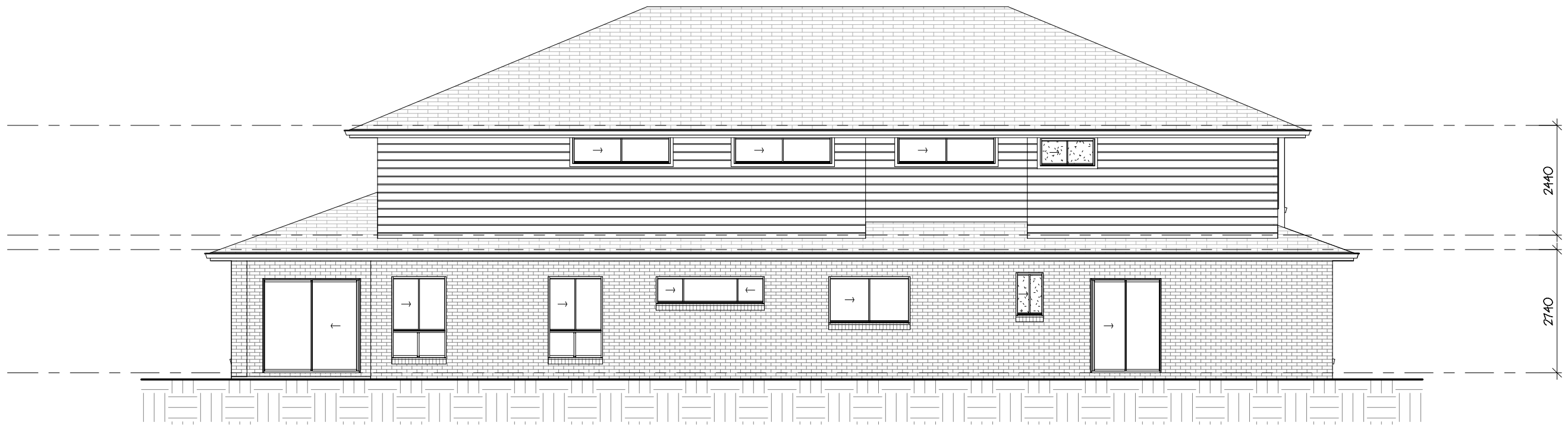
Front & Rear Elevations



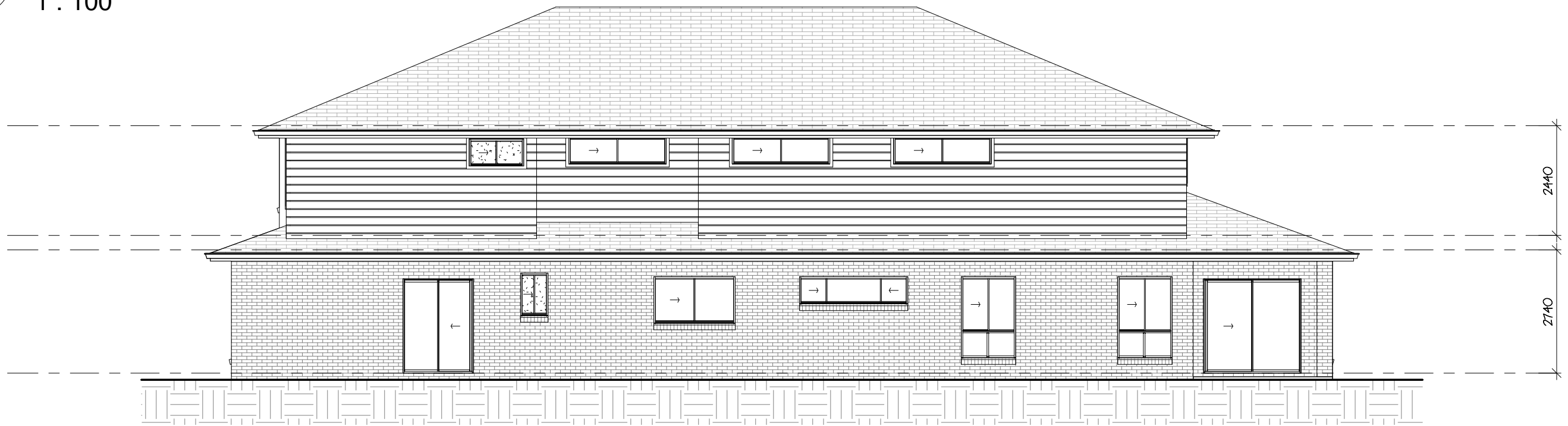
Vogue Homes NSW
ABN: 84 064 786 885
P: (02) 9607 9554
F: (02) 9607 0554
E: sales@vogue-homes.com.au
W: www.vogue-homes.com.au



© Copyright Vogue Homes NSW all rights reserved.
Dimensions, photos and floor plans are for illustrative purpose only and may include optional features.
Vogue Homes reserves the right to change plans, specifications, materials, brands and prices without notice.
Capitol Constructions T/AS Vogue Homes NSW.



3 Left Side Elevation
1 : 100



4 Right Side Elevation
1 : 100

Area Schedule		
Number	Name	Area
1	Garage	23.50 m ²
2	Ground Floor	119.83 m ²
3	First Floor	117.06 m ²
4	Porch	1.34 m ²
5	Alfresco	9.50 m ²

Unit Floor Area 271.22 m²
Total Floor Area 542.43 m²

Gross Floor Area		
Number	Name	Area
1	Ground Floor	117.75 m ²
2	First Floor	113.53 m ²
Total Gross Floor Area (Per Unit)		231.28 m ²

Gross floor area of the dwelling is as defined in the relevant legislation and does not represent the overall size of the dwelling. The Total Floor Area table is to be referred to for the overall dwelling size.

Sierra 58



definitivedrafting

Vogue Homes NSW
ABN: 84 064 786 885
P: (02) 9607 9554
F: (02) 9607 0554
E: sales@vogue-homes.com.au
W: www.vogue-homes.com.au

Side Elevations



© Copyright Vogue Homes NSW all rights reserved.
Dimensions, photos and floor plans are for illustrative purpose only and may include optional features.
Vogue Homes reserves the right to change plans, specifications, materials, brands and prices without notice.
Capitol Constructions T/AS Vogue Homes NSW.